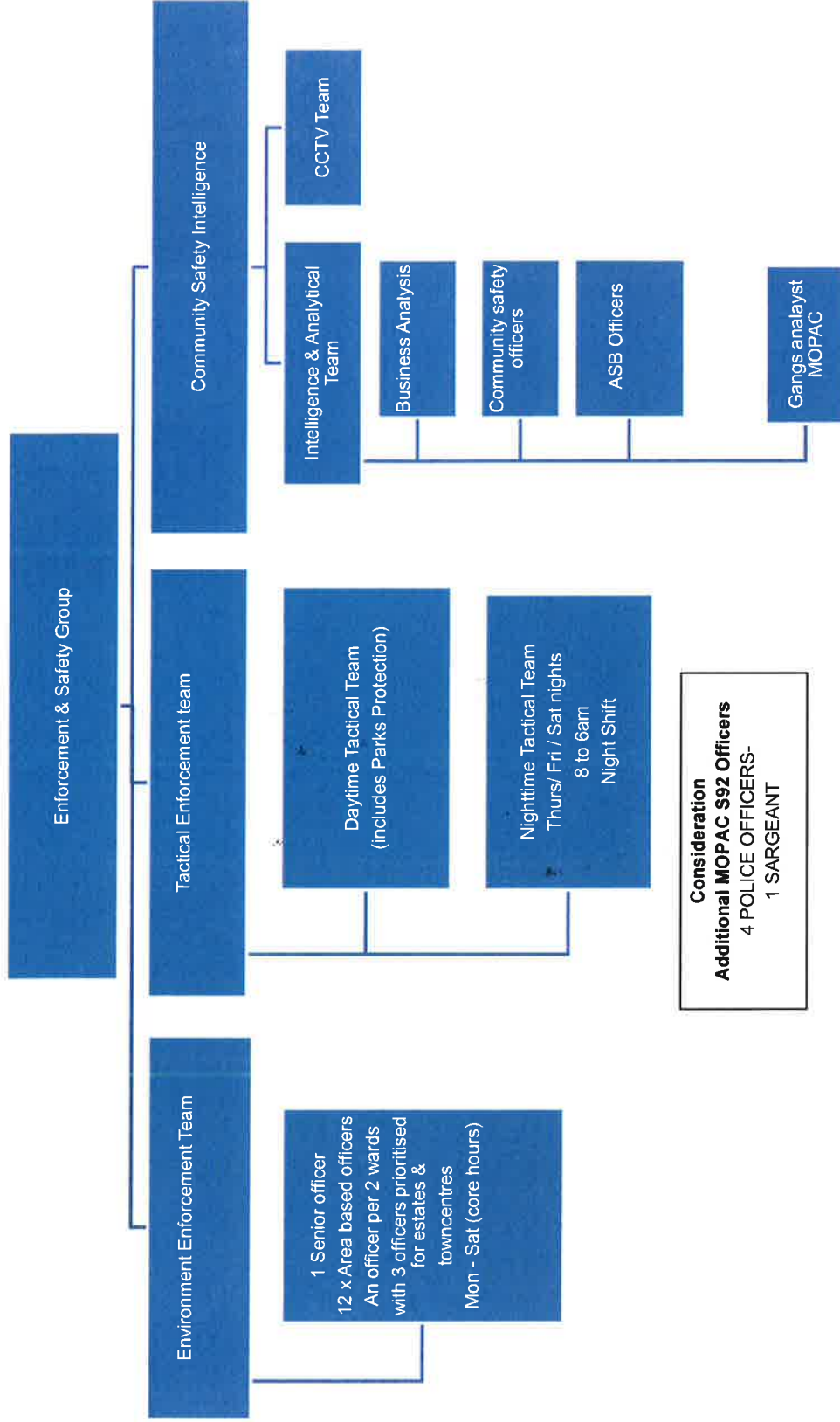


Appendix 2 Enforcement Model



Consideration
Additional MOPAC S92 Officers-
 4 POLICE OFFICERS-
 1 SARGEANT

- Area based with a locality focus on Enforcement
- Priorities include of environmental, nuisance/ASB & street based issues
- Visible and uniformed with bodycam etc.
- Promote civic pride & reduce perception of fear of crime
- Working within a policy framework & compliance model
- Walking their ward patches but mobile & right tools for job
- Shift pattern of work
- Additional focus on housing estates and Romford town
- Key focus quality and competency of officers
- Encourage engagement with Members & local area
- Collaborative working internally & partners

- Establish a tactical group that is focused on problem solving during the day & night time.
- Focus on criminal/organised gangs behaviour i.e. Travellers/ commercial fly tippers, ASB gangs
- Target resources supported by an intelligence approach
- Retain the Attestation for Park Constables but refocus on managing outcomes and extend the scope to other green spaces not yet covered by byelaws in Havering
- Shift pattern & seasonal working model
- Collaboration regional/ national Enforcement agencies

- Community Safety team transferred to Environment Aug 18
- Post funded via MOPAC / HRA and small revenue grant fund.
- Refocus to create Community Safety Policy & Intelligence Hub
- Transformation approach in creating intelligence hub in terms of technology and investment required for CCTV. Two models Housing Estate through regeneration programme but for other areas of Romford linked Smart City technology & opportunity for Drones